



MECAROANNE

— Solutions de broyage —

Hammer mill TYPE BF 300x450

FIELD OF APPLICATION

- › Mineral, chemical, pharmaceutical, nuclear industries, etc.
- › Aluminium chloride, salt, alumina, uranium oxide, molybdenum disulphide, iron sulphate, dry magnesium, phosphate and organic fertilisers, ceramic fibres, paraffin, talc, uncooked and cooked clay, sludge, waste, ashes, etc.



OPERATING PRINCIPLE

A rotor rotating at high speed (1800 rpm), equipped with 4 rows of 17 hammers that strike and crush the product. The output grain size is guaranteed by a calibration grid in the bottom section. Product feed must be performed along the entire length of the rotor with regular flow.



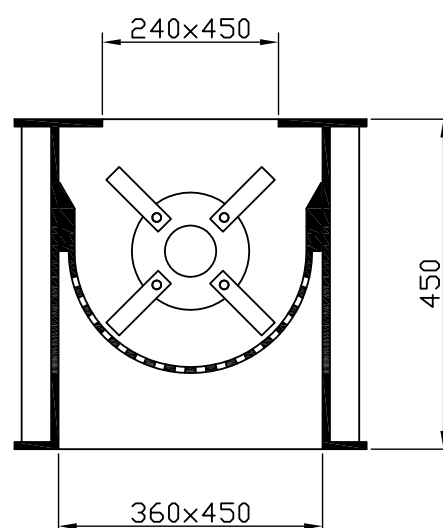
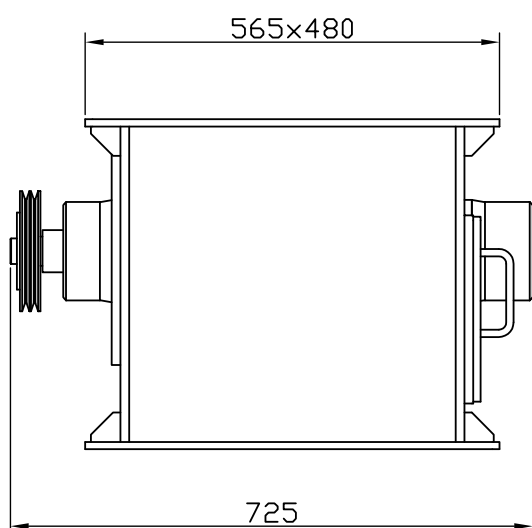
www.mecaroanne.com



TECHNICAL CHARACTERISTICS

Type	Ø rotors <i>mm</i>	Length rotors <i>mm</i>	Weight <i>kg</i>	Output grain size * <i>mm</i>	Installed power <i>kW</i>	Flow * <i>T/T/hour</i>
BF 300x450	300	450	255	0.5 to 5	7.5	0.2 to 3

** average values provided for reference, variable according to the type of processed materials, the speed of rotation and the perforation diameter of the grid.*



DESIGN

This device is composed of a **rigid frame** made of thick welded sheet metal (stainless steel optional). **Sealed and pressurised bearings** ensure optimal operation under the most demanding conditions. Its **simple design** allows **quick disassembly and replacement** of its calibration grid, mounted laterally on the device. The high rotor rotation speed ensures a **high rate of reduction** (>10) with a small footprint. Moreover, a torque limiter prevents mechanical breakage in the event of blockage by a foreign body.

